

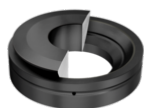


GE40-AX

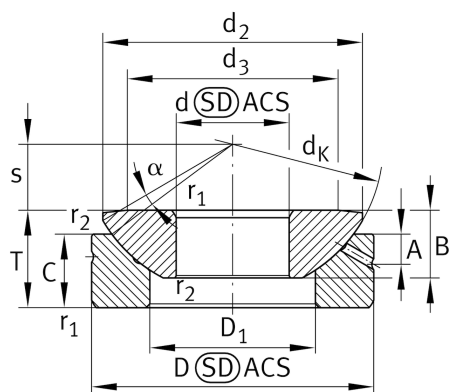
Spherical plain bearing

Schaeffler ID:
0066542580000

Axial spherical plain bearing, requiring maintenance, sliding contact surface: steel/steel



Technical information



Main Dimensions & Performance Data

d	40 mm	Inner diameter bearing
D	105 mm	Outside diameter bearing
T	32 mm	Height
C _a	373,000 N	Basic dynamic load rating, axial
C _{0a}	1,870,000 N	Basic static load rating, axial
	1.622 kg	Weight

Dimensions

d _K	114 mm	Ball diameter
d ₂	98 mm	Connection measure Inner ring
d ₃	78 mm	Front surface diameter of shaft washer
D ₁	59 mm	Inner diameter of housing washer
B	27 mm	Width Inner ring
C	22 mm	Width Outer ring
s	24.5 mm	Plane Surface Spacing
A	9 mm	Distance lubrication Bore
α	6 °	Tilt angle
d _{OT}	0 mm	Bore diameter bearing, upper tolerance
d _{UT}	-0.012 mm	Bore diameter bearing, lower tolerance
D _{OT}	0 mm	Outer diameter, upper tolerance
D _{UT}	-0.015 mm	Outside diameter, lower tolerance
T _{OT}	0 mm	Height, upper tolerance
T _{UT}	-0.4 mm	Height, lower tolerance
C _{OT}	0 mm	Width outer ring, upper tolerance
B _{OT}	0 mm	Width inner ring, upper tolerance
B _{UT}	-0.24 mm	Width inner ring, lower tolerance

Mounting dimensions

$r_{1\text{min}}$	1 mm	Edge Spacing
$r_{2\text{min}}$	0.3 mm	Edge Spacing
$d_{a\text{max}}$	78 mm	Connection measure Inner ring
$D_{a\text{min}}$	64 mm	Housing Connection Diameter

Temperature range

T_{min}	-60 °C	Operating temperature min.
T_{max}	200 °C	Operating temperature max.